

Exhibitions

Electronic Theater

Performances

Concerts

ISEA2002, 11th International Symposium on Electronic Art, NAGOYA [Orai]



電子芸術国際会議 2002 名古屋 [往来]

October 27 – 31, 2002, NAGOYA, JAPAN

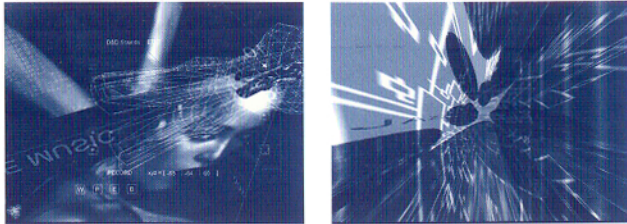
Warehouses, Garden Pier in port of Nagoya  
Nagoya Port Building  
NAGOYA CITY HIGASHI PLAYHOUSE  
Aichi Arts Center



## [SPACE], NAVIGABLE MUSIC

### LAB[au] laboratory for architecture and urbanism

LAB[au] laboratory for architecture and urbanism  
lab-au@lab-au.com  
<http://www.lab-au.com/space/>



'SPACE, Navigable Music' is an online project investigating the impact of IC technologies and particularly, 3D Real Time modeling languages (such as VRML) in the construct of space. According to the objectives of LAB[au] the project constitutes as much a space for theoretical research as a space of experimentation on the forms of interactions in networked systems exploring the possibilities of space settings in shared processes in order to build up connectivity.

In SPACE, navigable music, the object or architecture is generated in real time according to the position and movements of the user (mix color, mix image, mix sound). Operating on structural parameters, the integration (recombination) of spatial (x, y, z), temporal (t-movements) sonic (frequency, pitch) and generative image sequencing functions, each interaction by the user, displacement, transforms this visual and sonic environment. In addition, the recording of movements allows users to produce a traveling according to camera movements, montage and image sequencing. The established relation between the spatial, visual and sonic formalization processes and the editable interactivity of users lead to an experience combining architecture, music and cinematic techniques through movement patterns. The 'Navigable Music' thus constitutes a space, in which the user experiments cyberspace by dropping sounds into space, mixing music throughout space and navigation, record its movements to produce an animation, a traveling in its sonic space architecture, a kinetic music clip.

The [SPACE] (<http://www.lab-au.com/space>) performance is a collaboration between LAB[au] and the electronic musician [ERZATZ] who composes specific navigable music spaces. Based on the "space, navigable music" project ERZATZ explores the different forms of mixing music in and through e.space and its related images sequencing in order to create an immersive sonic and visual environment. The

composing of music through navigation in e.space and the spatialization of music through the quadraphonic diffusion, thus constitutes a performative space covering a broad range from VJ-ing to recorded soundspaces to live navigation and live space mixing, linking the digital space to the concrete one, mixed reality through vision and sound.

The performance consists in the live set (60min.) of [ERZATZ] presenting the compositions and real time mixes in the space, NAVIGABLE MUSIC environment.

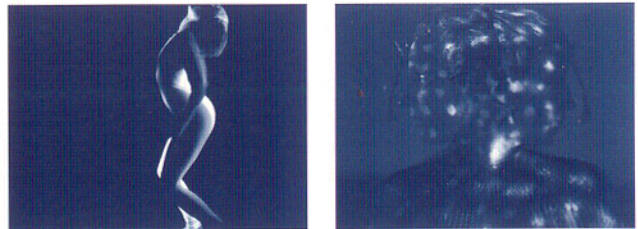
The music set is conceived as an open-end performance, where [ERZATZ] mixes his music while the public can experience the 'space' compositions via headphones.

Founded in 1995 LAB[au], laboratory for architecture and urbanism, links theoretical research LAB[a+u] to concrete works of conception and realizations LA,BAU. In this manner LAB[au] elaborates a 'metadesign' investigating the implications of new communication and computation technologies within spatio-temporal (space-time) structures as well as their forms of representation such as architecture and urbanism.

## The Dementia of Angels

### Le Corps Indice

Le Corps Indice  
corpsindice@corpsindice.com  
<http://www.corpsindice.com/>



THE DEMENTIA OF ANGELS  
BY ISABELLE CHOINIÈRE, THIERRY FOURNIER, FRANÇOIS ROUPINIAN

A strong telematic duet that integrates gestual creation, video, graphic design and electro-acoustic through network and in an interactive way. A fascinating live network performance of electronic art. Two distinct spaces which can be thousands of miles apart. Two performances using different stage and technological set up that are in every moments interdependent and interrelated.

## 路線図

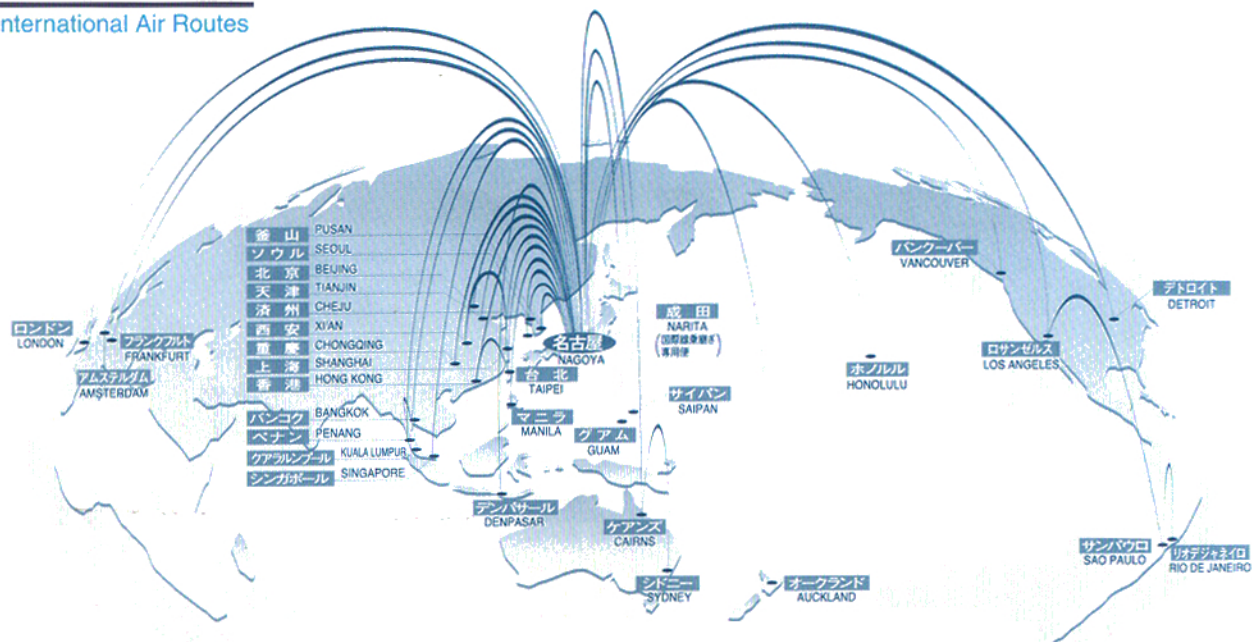
Routes

# 名古屋から日本が近い、世界が近い。

From Nagoya, Japan gets closer, and so close the world.

## 国際路線網

International Air Routes



名古屋空港ビルディング株式会社

〒480-0202 愛知県西春日井郡豊山町豊場字林先  
TEL.0568-28-1221 FAX.0568-28-6335

NAGOYA AIRPORT TERMINAL BUILDING CO., LTD.  
Toyoba Toyoyama-cho Nishikasugai-gun, AICHI 〒480-0202

<http://www.nagoya-airport-bldg.co.jp/>